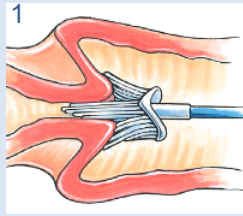


HPV 16/18 Genotyping: Quality Samples produce quality results

Use the correct
sample collection
Kit



3 simple steps for
sample collection



Insert brush into the
endocervical canal and
rotate brush 5 times in
a clockwise direction



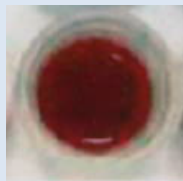
Disconnect the entire
head from the stem and
drop into the Surepath
preservative vial



Tighten the cap of the
vial and place into a
specimen bag, label and
send to Lab Med

Results
Interference

TOP VIEW



SIDEVIEW



Samples contaminated with
whole blood will be rejected